



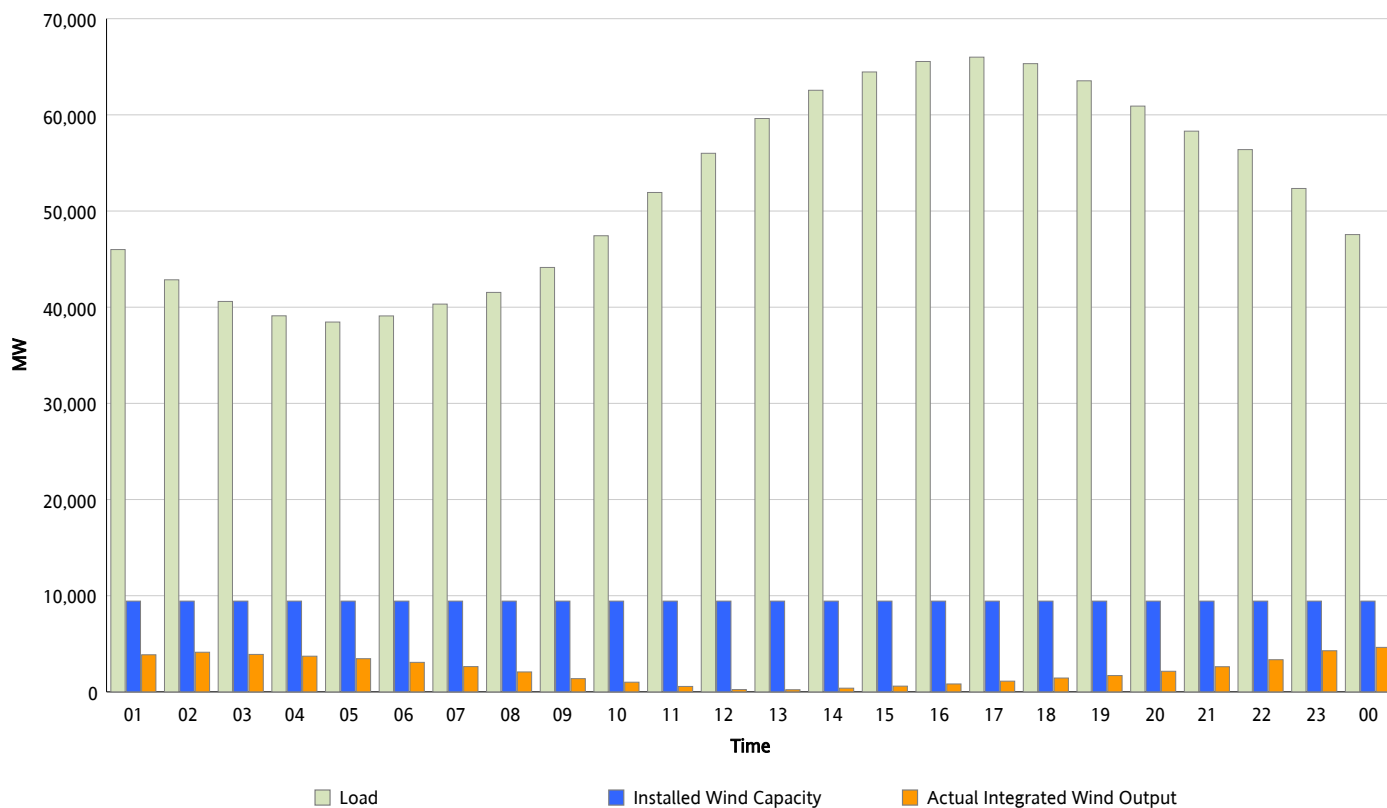
ERCOT Grid Operations

Wind Integration Report : 06/27/2012

Peak Load	66,001 MW
Load Peak Hour (HE)	17
Wind Over Peak	1,114 MW
Wind Record 06/19/12	8,368 MW
Max Wind Value*	4,768 MW
Wind Peak Time	23:55
Wind Integration %	10.43 %

Hourly Average Actual Load vs. Actual Wind Output

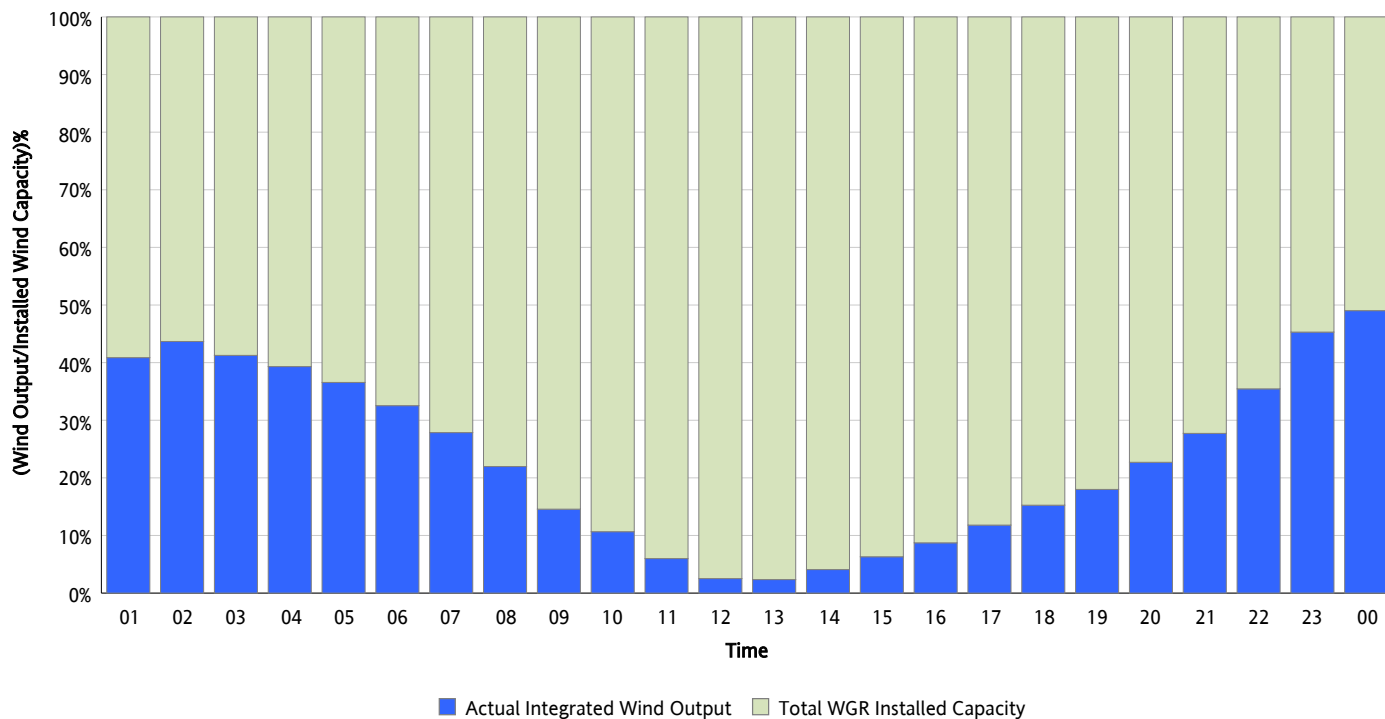
06/27/2012



* Wind Record and Wind Max represent instantaneous values and the rest of the values are integrated over the hour

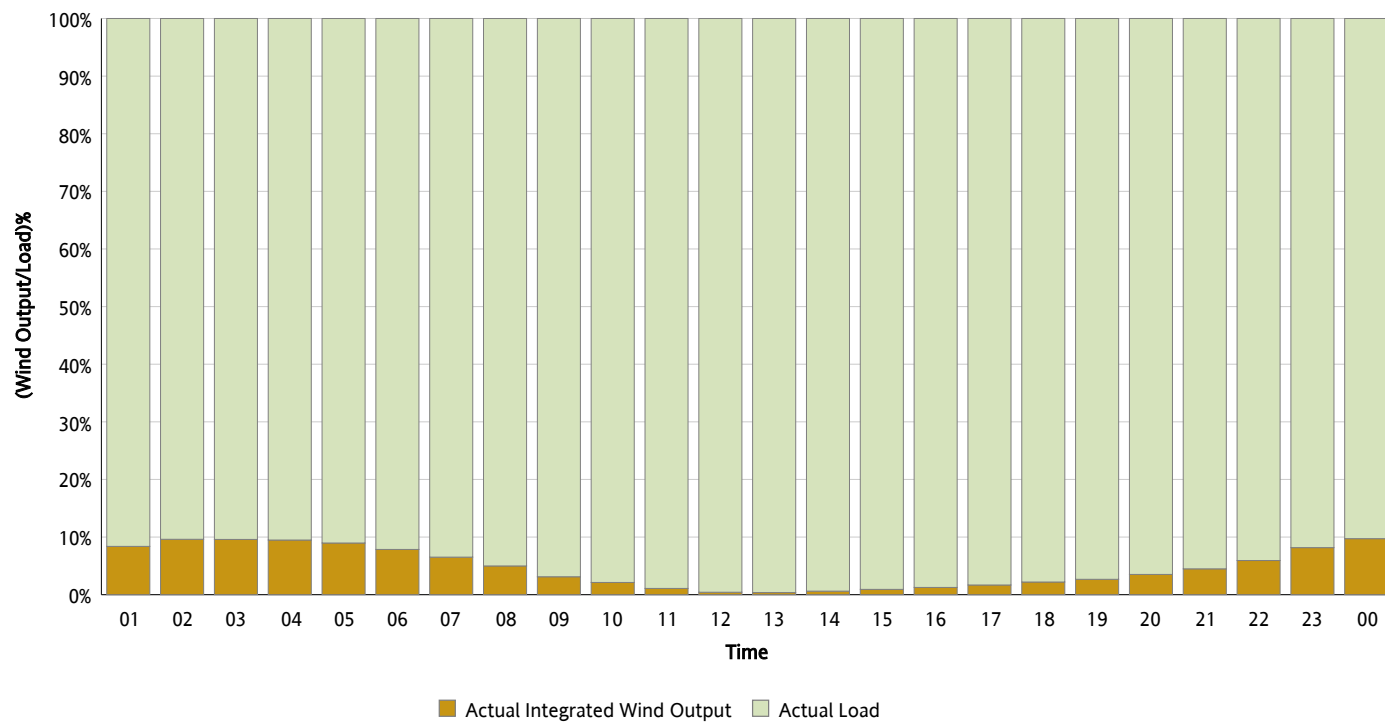
Actual Wind Output as a Percentage of the Total Installed Wind Capacity

06/27/2012



Actual Wind Output as a Percentage of the ERCOT Load

06/27/2012



ERCOT Load vs. Actual Wind Output

06/20/2012 - 06/27/2012

